



TINY HOMES *Expo Centre*

New Zealand's Biggest Tiny Homes Showyards



HONOLULU 38

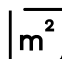
10.8m wide x 3.6m deep

Part of our best-selling range with smart layout options to go tiny and live big! Proudly made in NZ using high quality materials, fully insulated, transportable and relocatable.

Features

- ✓ Double glazing with aluminium joinery
- ✓ Insulated floor, walls and ceiling
- ✓ Quality underlay and carpet or durable vinyl plank
- ✓ High stud ceilings
- ✓ French doors
- ✓ RCD certified electrics with LED lights
- ✓ 16 or 32 amp power supply
- ✓ 16 litre per minute hot water califont
- ✓ 10 Year Warranty

Talk to us about helpful upgrade ideas for your Tiny Home

 **38m² External**

DISPLAY UNIT

 **2 Bedroom**

N/A*

 **1 Bathroom**

NEW BUILD

 **Kitchen**

from \$159,990*

*T&C's apply, see reverse.



TALK TO US ABOUT SPREADING THE COST OF YOUR NEW HOME BY USING FINANCE.



BUILDING CODE COMPLIANT

Our Tiny Homes are proudly built in New Zealand and comply with the New Zealand Building Code.

New Zealand's Best Tiny Homes Provider

Our company and products evolved from working within property, building and materials industries for decades. We believe in enabling Kiwi's to really **Start Living** by offering great service, great products and great prices. Just ask, we're here to help!

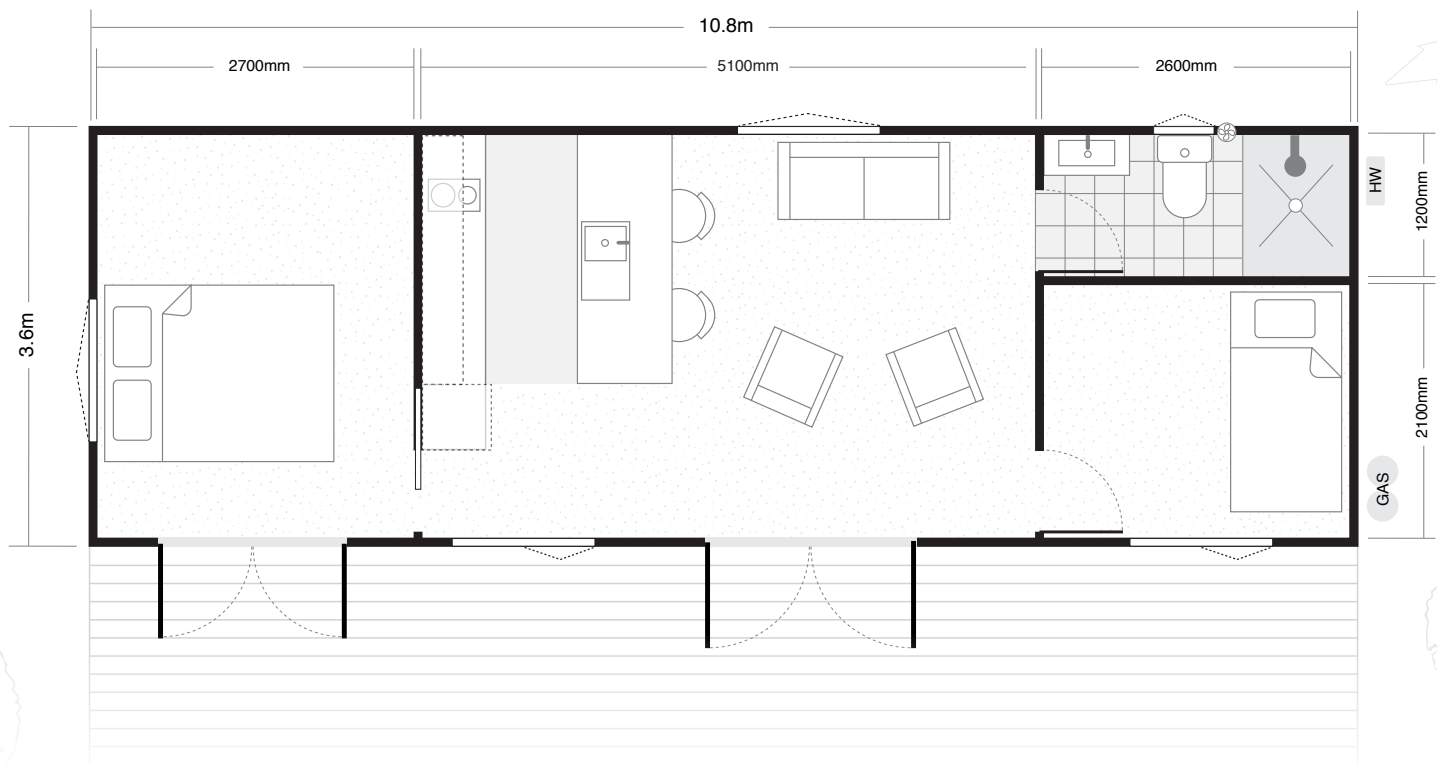


GO TINY *Start Living*

0800 447 261 | Silverdale | gotinyhomes.nz

HONOLULU 38m² External | 10.8m wide x 3.6m deep

Floor Plan



Floor plan drawing is not to scale. Decking shown is an added extra. Furniture shown is for demonstration purposes only.

Materials

Roof	Coloursteel
Framing	100 x 50mm Treated Pine
Cladding	Ply and Batten, CoreClad or Shadowclad®
Interior Walls	Plywood, MDF or Save Board
Ceiling	Plywood, MDF or Save Board
Joinery	Double Glazed Aluminium

Upgrade Ideas

Stone kitchen benchtop	Black cabinetry and tapware
Showerdome®	Heated towel rail
Heat pumps	Awnings and canopies
Sea spray zone spec	Delivery & Installation

What's Included

Kitchen	Sink, tapware, cabinets, soft close drawers, melamine bench top, 2 ring electric hobs, extractor fan
Bathroom	Shower, toilet, vanity, extractor fan (washing machine connections on some larger models)
Lighting	Power efficient LED lights throughout
Electrical	16 or 32 amp supply
Gas	16L per minute gas califont and dual bottle station
Flooring	Quality underlay and carpet or durable vinyl plank
Insulation	Under floor, walls and ceilings, double glazed joinery
Spouting	PVC gutter, downpipe and clips (supplied not fitted)

* All prices are subject to change without notice & are not guaranteed, unless that price is for an order accepted by Tiny Homes Expo Centre in writing. Price changes are due to increasing building material & transportation costs, & limited building material availability. Some materials used in the construction of your Tiny Home may differ from those listed herein, without notice, due to availability constraints or improvements in design. All materials used will be compliant to NZBC standards. Finance rates shown are for approved purchasers who meet lending criteria. T&C's apply to finance & products. View details online at gotinyhomes.nz/terms



**BUILDING CODE
COMPLIANT**



**FINANCE
OPTIONS**

GO TINY
Start Living
gotinyhomes.nz



**NZ WIDE
DELIVERY**



**10 YEAR
WARRANTY**



We're here to help,
contact our experienced
team about your
tiny home dream!

OPEN 7 DAYS
Mon–Fri 9am–5pm
Sat–Sun 10am–4pm

SILVERDALE
2 Silverdale Street
Auckland 0932

LET'S TALK
0800 447 261
sales@gotinyhomes.nz