



# TINY HOMES *Expo Centre*

New Zealand's Biggest Tiny Homes Showyards



**ALOHA Range**  
TRANSPORTABLE CABINS

*\*Image shows added decking*

## DIAMOND HEAD 48

12m wide x 4m deep

Part of our best-selling range with smart layout options to go tiny and live big! Proudly made in NZ using high quality materials, fully insulated, transportable and relocatable.

### Features

- ✓ Double glazing with aluminium joinery
- ✓ Insulated floor, walls and ceiling
- ✓ Quality underlay and carpet or durable vinyl plank
- ✓ High stud ceilings
- ✓ French doors
- ✓ RCD certified electrics with LED lights
- ✓ 16 or 32 amp power supply
- ✓ 16 litre per minute hot water califont
- ✓ 10 Year Warranty

**Talk to us about helpful upgrade ideas for your Tiny Home**

 **48m² External**

 **3 Bedroom**

 **1 Bathroom**

 **Kitchen**

**DISPLAY UNIT**

from **\$149,995\***

**NEW BUILD**

from **\$168,495\***

\*T&C's apply, see reverse.



**TALK TO US ABOUT SPREADING THE COST OF YOUR NEW HOME BY USING FINANCE.**



**BUILDING CODE COMPLIANT**

Our Tiny Homes are proudly built in New Zealand and comply with the New Zealand Building Code.

**New Zealand's Best Tiny Homes Provider**

Our company and products evolved from working within property, building and materials industries for decades. We believe in enabling Kiwi's to really *Start Living* by offering great service, great products and great prices. Just ask, we're here to help!



**GO TINY** *Start Living*

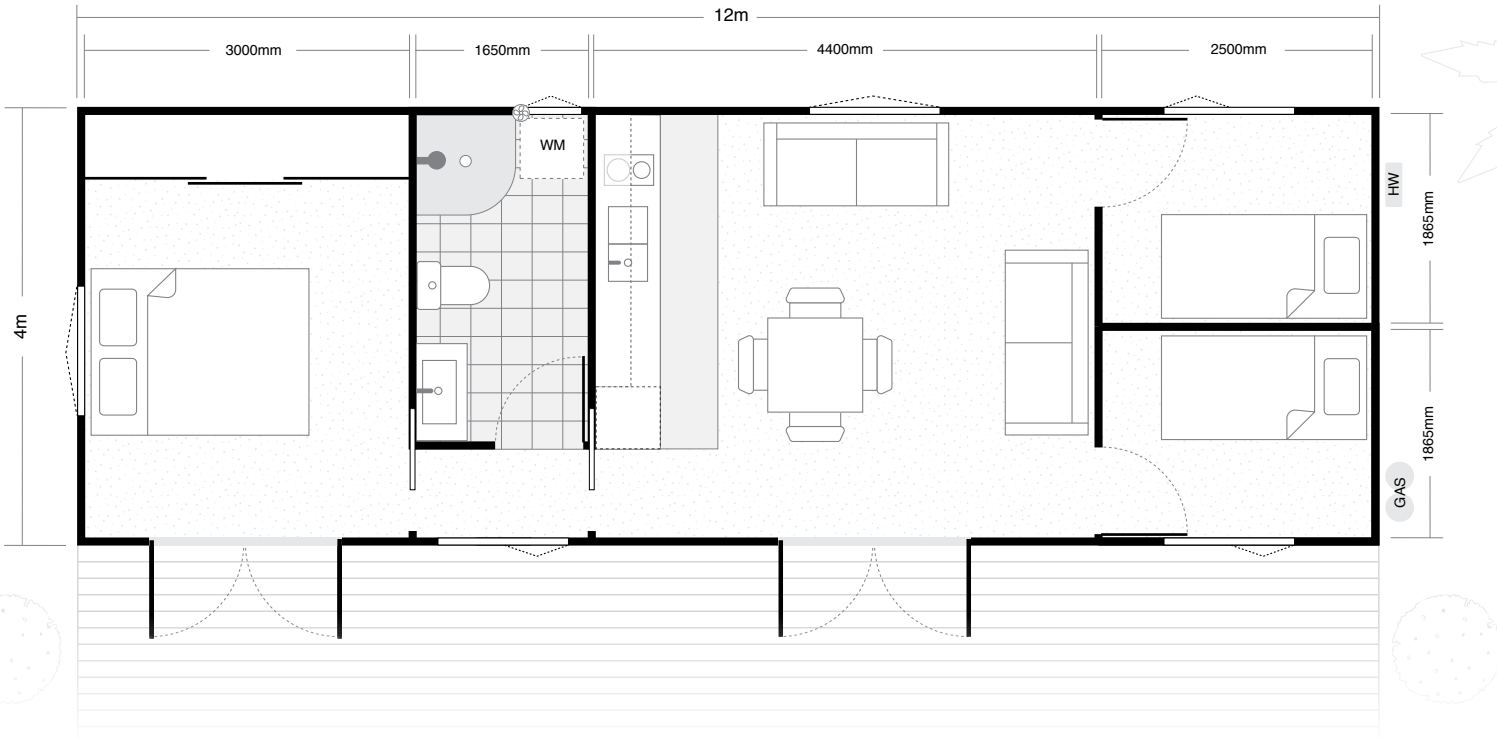
0800 447 261 | Silverdale | [gotinyhomes.nz](http://gotinyhomes.nz)

# DIAMOND HEAD 48m<sup>2</sup> External | 12m wide x 4m deep



07 OCT 2022

## Floor Plan



Floor plan drawing is not to scale. Decking shown is an added extra. Furniture shown is for demonstration purposes only.

### Materials

Roof	Coloursteel
Framing	100 x 50mm Treated Pine
Cladding	Ply and Batten, CoreClad or Shadowclad®
Interior Walls	Plywood, MDF or Save Board
Ceiling	Plywood, MDF or Save Board
Joinery	Double Glazed Aluminium

### Upgrade Ideas

Stone kitchen benchtop	Black cabinetry and tapware
Showerdome®	Heated towel rail
Heat pumps	Awnings and canopies
Sea spray zone spec	Delivery & Installation

### What's Included

<b>Kitchen</b>	Sink, tapware, cabinets, soft close drawers, melamine bench top, 2 ring electric hobs, extractor fan
<b>Bathroom</b>	Shower, toilet, vanity, extractor fan (washing machine connections on some larger models)
<b>Lighting</b>	Power efficient LED lights throughout
<b>Electrical</b>	16 or 32 amp supply
<b>Gas</b>	16L per minute gas califont and dual bottle station
<b>Flooring</b>	Quality underlay and carpet or durable vinyl plank
<b>Insulation</b>	Under floor, walls and ceilings, double glazed joinery
<b>Spouting</b>	PVC gutter, downpipe and clips (supplied not fitted)

\* All prices are subject to change without notice & are not guaranteed, unless that price is for an order accepted by Tiny Homes Expo Centre in writing. Price changes are due to increasing building material & transportation costs, & limited building material availability. Some materials used in the construction of your Tiny Home may differ from those listed herein, without notice, due to availability constraints or improvements in design. All materials used will be compliant to NZBC standards. Finance rates shown are for approved purchasers who meet lending criteria. T&C's apply to finance & products. View details online at [gotinyhomes.nz/terms](http://gotinyhomes.nz/terms)



**BUILDING CODE COMPLIANT**



**FINANCE OPTIONS**

**GO TINY**  
*Start Living*  
[gotinyhomes.nz](http://gotinyhomes.nz)



**NZ WIDE DELIVERY**



**10 YEAR WARRANTY**



We're here to help, contact our experienced team about your tiny home dream!

**OPEN 7 DAYS**  
Mon-Fri 9am-5pm  
Sat-Sun 10am-4pm

**SILVERDALE**  
2 Silverdale Street  
Auckland 0932

**LET'S TALK**  
0800 447 261  
[sales@gotinyhomes.nz](mailto:sales@gotinyhomes.nz)