



**NEW HUGE MT WELLINGTON
SHOWYARD NOW OPEN!**
Opposite McDonald's at the ex Moyes Holden Yard

PORTO *Range*

SARDINIA 24

5.8m wide x 4.2m deep | 24m² Internal

Transportable / Relocatable
Studio + Bathroom + Kitchen

- ✓ High grade steel framing
- ✓ Kiwicolour vertical corrugated cladding
- ✓ Veneer plywood wall & ceiling lining
- ✓ Aluminium joinery & sliding doors
- ✓ Insulated floor, walls & ceiling
- ✓ Marley Stormcloud PVC guttering
- ✓ RCD certified electrics with LED lights
- ✓ Quality 12mm underlay with SDN carpet
- ✓ 21 litre per minute hot water califont
- ✓ Building Code Compliant with 5 year warranty

Optional Extras

Solar panels, decking, awnings, outdoor LED lights and more are available, full listing on reverse.
Optional extra decking & awning shown in visual above.

Pricing Options

Sardinia 24	\$64,995
No Deposit Finance	\$295 per week



BUILDING CODE COMPLIANT



Full Turnkey Service



NZ Wide Delivery



No Deposit Finance



5 Year Warranty

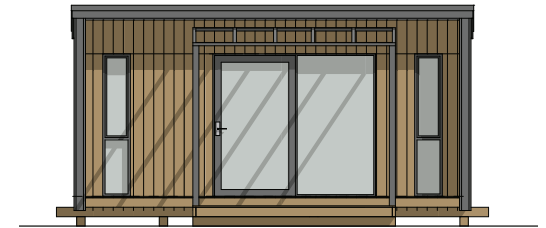
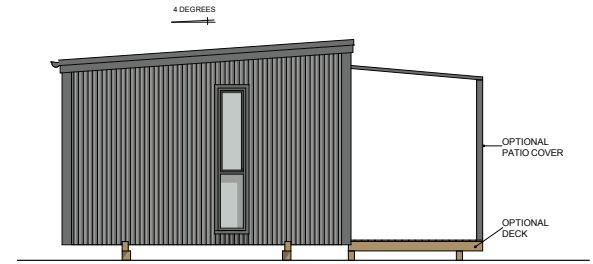
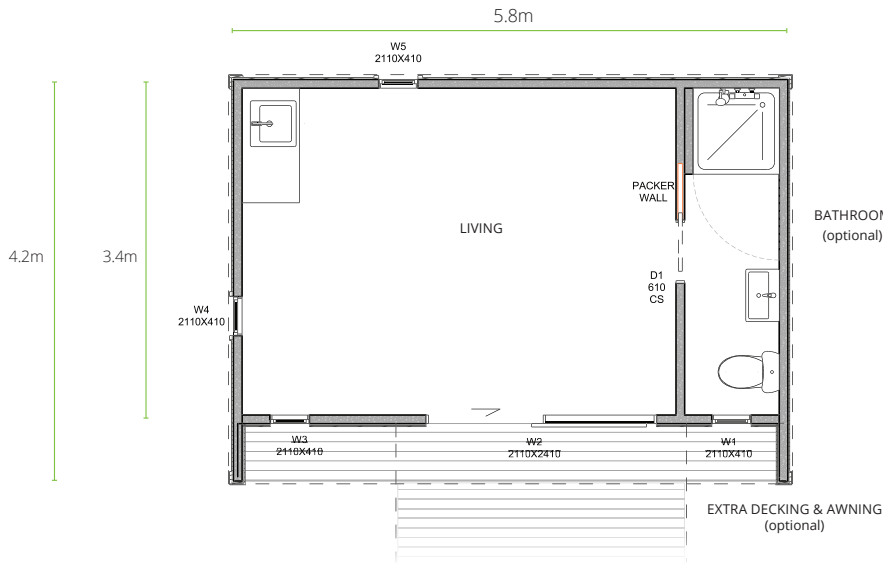
VISIT NZ'S BIGGEST CABIN & SLEEPOUT SHOWYARDS

OPEN 7 DAYS Mon-Fri 9am-5pm, Sat-Sun 10am-4pm | 0800 447 261 | gotinyhomes.nz

SILVERDALE 2 Silverdale Street, Auckland 0932 **MT WELLINGTON** 500 Ellerslie Panmure Highway, Auckland 1060



SARDINIA 24 5.8m wide x 4.2m deep | 24m²



SARDINIA 24 MATERIALS

Roofing	0.42 BMT Kiwicolour TRS5 roofing, Thermabar 344 fire retardant building paper, 70x45 SG8 H1.2 purlins, Steel framing
Gutters	Marley Stormcloud PVC
Framing	Axxis LGS Steel framing with Enviroseal wrap
Cladding & Walls	Kiwicolour vertical corrugated cladding, Enviroseal Proctor Wrap, 9mm thick polystyrene Thermal Break, Axxis LGS steel framing
Interior	8.2mm veneer plywood lining on walls & ceiling
Floor	19mm plywood flooring with 140x45mm SG8 H1.2 joists at 450 CRS
Joinery	Aluminium joinery, single glazed
Exterior Door	Sliding (2110 high x 2410mm wide)

OPTIONAL EXTRAS

Decking	\$250 per sqm
Outside LED Sensor Light	\$165
Heated Towel Rail	\$395
Shower Dome	\$285
Composting Toilet (Bambooloo)	\$1200 each

WHAT'S INCLUDED

Kitchenette	Sink, tapware, cabinets, soft close drawers
Electrical	20m electrical caravan cord, RCD certified, internal 3 pin plugs, certified
Gas	Califont mounted and installed externally, 21 litres per minute, certified
Lighting	1 external light, 5 internal LED light
Plumbing	Kitchen, bathroom, macerator for toilet, guttering and downpipe for tank, certified
Bathroom	900mm shower, toilet, vanity, extractor fan
Flooring	Quality underlay (13mm), carpet and vinyl
Insulation	Expol Underfloor Insulation R1.4, Earthwool wall and ceiling Batts

Additional Windows	from \$675
Solar Panels	POA
Grooved Plywood Interior Walls	POA
Delivery and Installation	Please ask for a quote, site info required



Full Turnkey Service

We can complete the whole process from cabin choice to delivery & installation.



New Zealand Wide Delivery

We can deliver and install your cabin nationwide using our established logistics network.



No Deposit Finance

Spread the cost of your cabin or sleepout with our market leading finance package with no deposit.



5 Year Warranty & Certificates

On materials, construction & components including gas & electrical certificates for your peace-of-mind.

VIEW THE RANGE & TALK TO THE TEAM

OPEN 7 DAYS Mon–Fri 9am–5pm, Sat–Sun 10am–4pm | 0800 447 261 | gotinyhomes.nz

SILVERDALE 2 Silverdale Street, Auckland 0932 **MT WELLINGTON** 500 Ellerslie Panmure Highway, Auckland 1060

**NEW HUGE MT WELLINGTON
SHOWYARD NOW OPEN!**

Opposite McDonald's at the ex Moyes Holden Yard